

NEUGART NEUGART NEUGART NEUGART NEUGART NEUGART NEUGART NEUGART NEUGART NEUGART NEUGART NEUGART

力。高精度。合作伙伴

power. precision. partnership.



高精度变速器
precision gearboxes



高强度、高精度。
良好的合作伙伴关系。

尊敬的女士们，先生们，
超强动力，高精度以及良好的合作伙伴关系是本公司80多年来始终贯彻执行的经营理念。

今天呈现在您面前的全新编辑的产品目录中，将用90多页的篇幅向您介绍我们多年的宝贵经验和公司专业实力。

当前的供货目录中包括许多成熟的，具有创新和技术性的驱动及变速器解决办法。本公司可以向您提供六种不同的行星齿轮传动减速器系列，分别具备经济、高精度和高效等不同应用特点。作为您卓越的技术合作伙伴我们还将研发并生产高精度齿轮啮合部件以及完全遵照客户需求的特殊变速器。

特别说明：WPLN代表了变速器行业技术标准。新型高精度锥齿轮变速器的运行噪音明显降低、其具有坚固的结构设计、高效以及完美的实际应用。

如果您对产品目录2009或我们的产品/服务有疑问，欢迎随时查询，我们时刻为您服务。

*Impress with power and precision.
Inspire with partnership.*

*Dear Sir or Madame,
Power, precision and partnership – these values characterise our business philosophy and our work, and have for over 80 years.*

In our newly designed and newly structured catalogue, introduced to you today, we present over 90 pages of our experience and performance.

The current product range includes numerous innovative and technologically mature drive and gear solutions. We now offer six different planetary gear series for the sectors Economy, Precision and High Performance. As a competent technology partner, we develop and manufacture highly precise gear parts as well as specialised gearboxes – adapted precisely to your specific needs.

We would especially like to point out the absolute highlight of this edition: The WPLN sets a new benchmark in gearbox technology. Our new angle-precise gearbox distinguishes itself with its significantly reduced operating noise and compactness, its efficiency and excellent performance.

Please contact us if you have any questions about the 2009 catalogue, our products or services – we're happy to help.

Bernd Neugart
管理成员
managing partner



Thomas Herr
管理成员
managing partner



2-5 企业 / *The Company*



PLN 6-19

低回程间隙行星减速机
low backlash planetary gear box
最高精密级
precision at highest level

WPLN 20-33

低回程间隙角度输出减速机
low backlash angle gear box
高精度锥齿轮变速器
the precision angular gear box

PLE 34-51

低回程间隙行星减速机
low backlash planetary gear box
相对PLN-系列，合理的经济型产品
the economy alternative to the PLN-line

WPLE 52-67

低回程间隙角度输出减速机
low backlash angle gear box
PLE系列的转角式减速机
the angular gear box of PLE-line

PLFE 68-77

低回程间隙经济型法兰输出减速机
low backlash economy flange gear box
结构紧凑，性能卓越
compact efficiency

PLF HP 78-87

高效法兰连接式减速机
high performance flange gearbox
高刚度、高性能和结构紧凑短小
high stiffness with high performance data and short construction



PLN

WPLN

PLE

WPLE

PLFE

PLF HP

88-89 减速机关键尺寸/选型 / *gearhead sizing/selection*

90-91 最大可传递输出转矩
Max. transferable output torque

92-93 热容技术符合S1模式
thermal specifications for S1 operation

94-95 特种减速机 / *custom made gear boxes*

96-97 用户定制齿轮 / *custom made toothings*

98-100 联系 / *contact*

注重细节， 打造完美。 公司产品。

高效、功能强劲：
高精度行星齿轮传动变速器。

无论在机床、铸塑机中，还是在包装机、印刷机和纺织器械中，或在自动控制技术、喷涂机械手设备中：我们的高精度行星齿轮传动变速器对于各种不同的应用领域将是最好的选择。
此外本公司还提供非标准类的器械。
本公司将持续研发高品质的驱动设备。

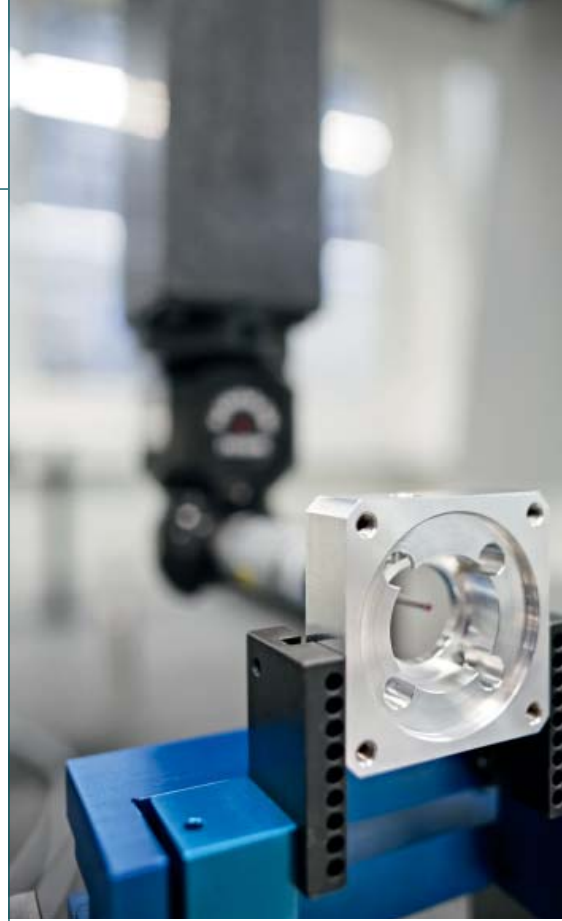
- 概览：**
- > 产品种类丰富 - 标准变速器，特殊变速器和啮合件。
 - > 六种标准产品系列 - 多种选择。
 - > 特殊变速器 - 根据客户要求量身打造。
 - > 啮合件 - 提供不同的加工方式。
 - > 高质量、灵活性 - 理想供货时间。

创新和独特：
特殊变速器。

坚固的结构设计及高性能、特殊的结构需求。
食品级的认证或独特的设计：本公司可以满足客户在机械领域中的各种复杂要求。
高素质的技术工程师设计变速器系统并解决变速器各种问题。
服务、成本和质量恰到好处。
创新优势：本公司将长期的专业经验以及不断的研发成果运用到客户解决办法中。

值得信赖、高精度：
我们的结合点。

本公司提供驱动技术领域里的各种部件。
根据客户要求。



Perfection – in every detail. Our products.

Powerful and efficient:
Our precision planetary gearboxes.

*Whether in machine tools or die-casting machines, in packaging, printing and textile machines, in automation technology or in robotic painting systems: Our precision planetary gearboxes are ideally suited for numerous applications.
We offer much more than just standard. The high-quality drive elements are continuously being developed further.*

At a glance:

- > *A broad product range – standard gearboxes, specialised gearboxes and gear parts.*
- > *Six strong standard model series – many options.*
- > *Specialised gearboxes – individually customised to your needs.*
- > *Gear parts – a wide range of options.*
- > *High quality and flexibility – with optimal delivery times.*

Innovative and individual:
Our specialised gearboxes.

*Compact form and high performance, special construction requirements. Food grade certification or individual design: We fulfil even your most complex requirements – in all sectors of machine building. The qualified specialists of our engineering department design gearbox solutions and systems according to your performance, quality and quality needs.
Your benefit from innovation: We utilise our experience and at the same time take advantage of new developments, integrating them into our customer solutions.*

Reliable and highly precise:
Our gear parts.

We offer you numerous additional components relating to drive technology. Perfect for your needs and demands.

质量好。 服务优。

顾客满意是本公司的终极目标，产品质量和服务是我们的首要任务。

本公司的质量-环保理念保证并保持了我们在国际市场上不断地取得巨大成功。

概览：

> 目标明确。

针对领导层、所有工作人员以及工作质量本公司制定了具体的质量目标。

> 承诺。

应重点强调的是我们是一支高效、高素质的团队。除了权威的培训与指导之外，我们的员工会相应的对自己的任何行为负责。

> 持续。

我们坚持完善每个工作流程，从小做起构成了我们进行重大革新和完善的基石

> 可证明的。

我们设计制定、执行了质量-环保管理系统并对其进行详细记录，该管理系统涵盖了本公司所有产品。在质量-环保管理系统文件中包含了所有一般重要规则。

Power – at a high level. Our quality.

Your satisfaction is our measuring stick – that's why the quality of our products and services are always our top priority.

With our quality and environmental policy we secure and expand our economic success on all international markets.

At a glance:

> *Goal oriented.*

We declare concrete quality goals – under the responsibility of the management and involvement of all employees as well as consideration of the quality of work.

> *Committed.*

We put emphasis on a highly motivated and qualified team. In addition to training and instruction, our employees receive authority as well as responsibility for their activities.

> *Consistent.*

We are in a process of continuous improvement – and we connect the large steps of innovation with the small steps of continual optimisation.

> *Verifiable.*

We maintain and document a comprehensive quality and environment management system that comprises all phases of the rendering goods and services. All regulations relevant to the standards are described in the documentation of the QM/EM system.



尽情享受。 我们的服务。

我们不仅创造产品，还有根据不同功能，以经济、长远的方式解决各种不同的问题。对此，本公司期待与您的合作以及为您提供更为舒适的服务。

> **直接来讲：**

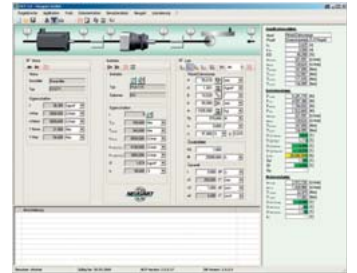
本公司提供由咨询到研发设计的服务。您的问题就是我们的任务：我们向您提供咨询服务并与您一起讨论研发新的、适当的解决问题的办法。我们员工中的10%在设计 and 研发部门工作。

> **处于领先地位：**

专业技能和技术。
创新的、先进的生产工艺值得信赖，高素质的员工队伍值得信赖。本公司免费提供NCP传动系设计软件。在网页下载区域为您提供CAD制图，尺寸图或使用说明。

> **对所有情况：**

高效。
生产面积总计扩建11.000 m²，这样足以保证我们标准产品的理想供货时间。另外您可从我们高品质的产品中获得公平的市场价格以及长期的成本优势。



Simply greater benefit. Our service.

We don't just make products, we create solutions – functional, economical and forward-looking. Therefore, intensive collaboration and the right service for you are important to us.

> **From one source:**

From consulting to development. Your task, our job: We provide consulting and develop new and customised solutions together with you. Roughly 10% of our employees work in development and design.

> **At a new level:**

Know-how and technology. Trust in innovative and proven manufacturing methods and in the knowledge of our employees. NCP, the design software for the power train, is available to you at no cost. And our website offers you a comprehensive download area – with CAD drawings, dimension sheets or operating instructions.

> **On all accounts:**

Focus on efficiency. With our expanded production area of 11,000 m² we can guarantee optimal delivery times for our standard products. You also profit from fairly calculated market prices, from permanent cost optimisation – with consistent high quality.



公司网络全球化。 竭诚为您服务。

本公司在产品质量、技术支持和服务上的高标准要求得到了国际认可：在全世界所有重要的工业国家中我们拥有超过20家代理和分支机构。

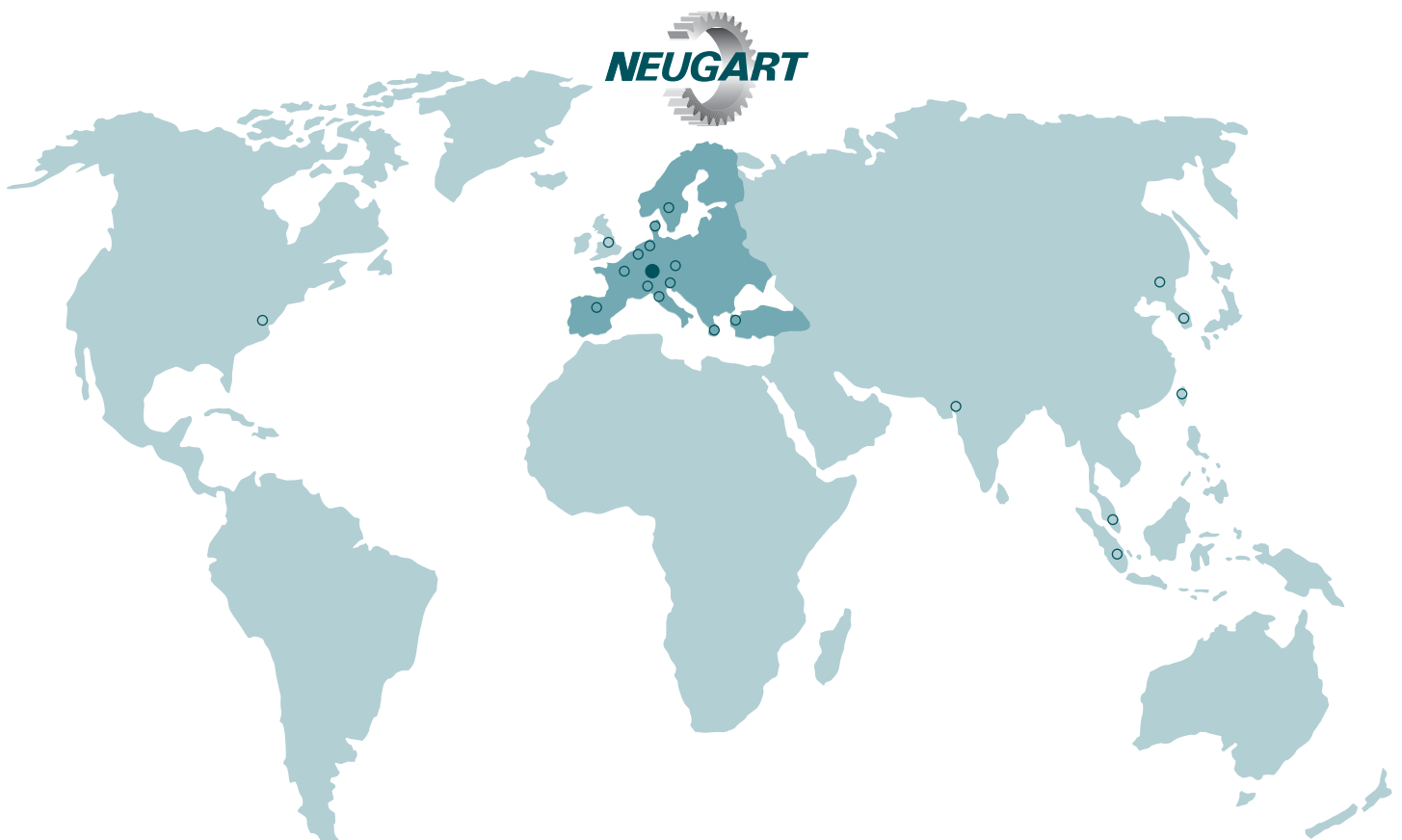
本公司只在德国进行产品制造。在美国和中国的组装厂可以满足不同地区的需求并保证供货时间和货物调度的灵活性。



*Globally active
for you.
Our network.*

Our high standard in product quality, support and service appreciated internationally: With over 20 representatives and branches, we are represented in all important industrial nations.

We manufacture our products exclusively in Germany. In the USA and China, our assembly factory serve regional markets, guaranteeing a high level of flexibility for adaptations as well as the shortest delivery times.





齿轮

spur-toothed wheel

磨削齿轮，表面精度可达5级，
模数 0,5-3
最大外径 250 mm

*spur-toothed wheel with grounded
and honed tooth profile up to quality 5,
module 0,5-3
max. outside diameter 250 mm*

伞齿轮

bevel gears

伞齿轮，铣削，直齿可达模数1.4；
最大直径100 mm

伞齿轮，磨削，直齿可达模数2；
最大直径120 mm

*bevel gears, milled, straight spur toothed
up to module 1,4; max. diameter 100 mm*

*bevel gears, planed, straight spur toothed,
up to module 2; max. diameter 120 mm*



齿条

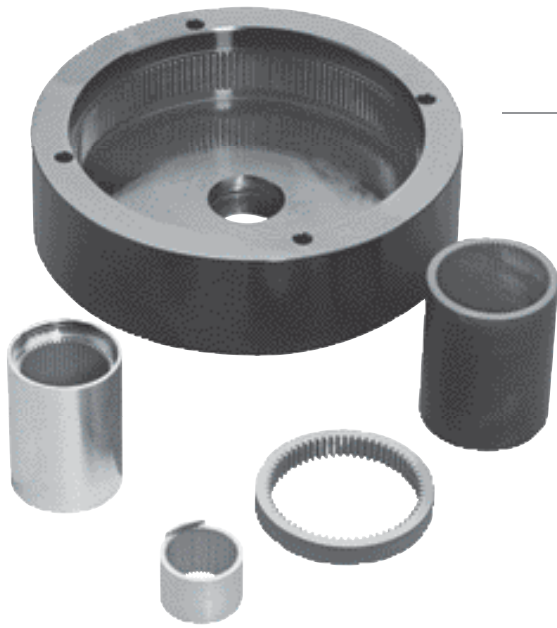
spur racks

齿条，直齿，
可达模数4；长度 1000 mm

齿条，斜齿，
可达模数1.25；长度400 mm

*spur racks, straight spur toothed,
up to module 4; length 1000 mm*

*spur racks, helical toothed,
up to module 1,25; lenght 400 mm*



内齿轮
Internal gearing

清除/碰撞
模块0.3 – 3至质量7

broached/shaped
Module 0.3 – 3 up to quality 7

特殊部件
customer-specific parts

个性化的产品结构
- 专业的支持在结构设计到最终的产品

- individual tool construction
- specialized support in the construction phase to end product

材料
- 尼龙
- 聚乙烯
- 塑料
- PEEK

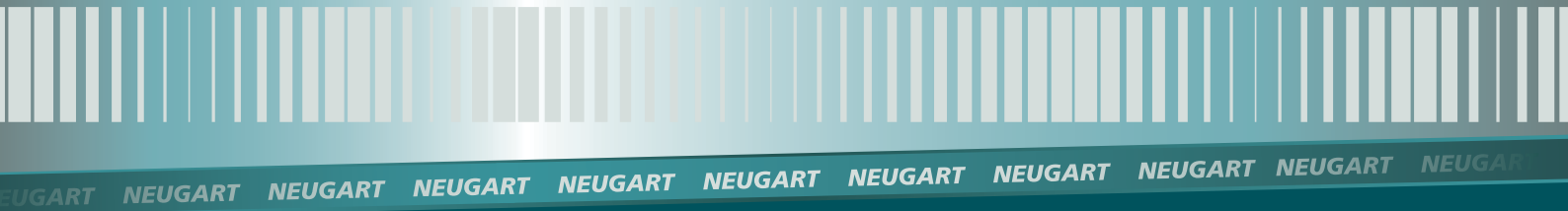
our material
- Polyamide
- Polyethylene
- Teflon
- PEEK



蜗轮和蜗杆
worm and thread shafts

蜗轮和蜗杆，精密铣削可达模数2

worm and thread shafts, precision-milled up to module 2



纽卡特行星减速机（沈阳）有限公司
电话：024 - 25378129
传真：024 - 25372552
网址：www.neugart.net.cn
邮箱：neugart@vip.163.com

Neugart GmbH
Keltenstraße 16
D-77971 Kippenheim
phone: (+49) 7825-847 0
fax: (+49) 7825-847 2999
email: vertrieb@neugart.de
internet: www.neugart.de

